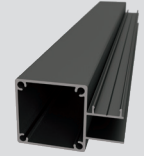
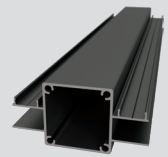


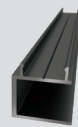
### i Concealed Fixing Post Options



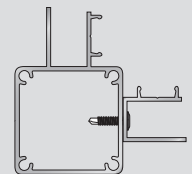
1-Way (VS5035)



2-Way (VS5040)



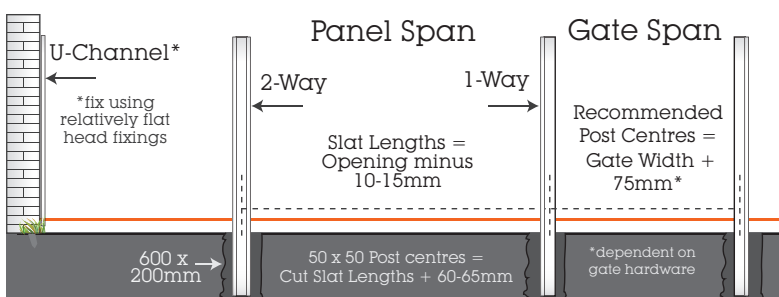
U-Channel (VS5015)


Corner Post Setup  
U-Channel fixed to 1-Way Post

<b>A</b>	Slats - 65 x 16mm (VS5005) or 90 x 16mm (VS5010)	<b>F</b>	Snap-On Fixing Cover (VS5025)
<b>B</b>	1-Way Concealed Fixing Post (VS5035)	<b>G</b>	Centre Mullion (VS5020)
<b>C</b>	Concealed Fixing U Channel (VS5015)	<b>H</b>	50 x 50mm Post Cap - P/C Ali (VS5090) or Plastic (VS5075)
<b>D</b>	In Post Spacers* - 10mm (VS5050) *Optional	<b>I</b>	U-Channel Cap - P/C Ali (VS5080) or Plastic (VS5065)
<b>E</b>	10-16*16mm Self Tapping Tek Screw (HW5000)	<b>J</b>	Centre Mullion Cap - P/C Ali (VS5085) or Plastic (VS5070)

## 1 Post Holes & Post/U-Channel Install

- Measure and mark post hole positions, according to the below diagram.
- Dig post holes along string line; 600mm deep x 200mm in diameter. Posts will sit approximately 500mm into the holes.
- For U-Channel scenario, fix U-Channel to structure using material appropriate fixings. Ensure you use a relatively flat head fixing so they won't foul the slats when they are inserted into the U-Channel.



## 2 Slat Install

- Cut Slat lengths **10-15mm** short of the spacing between post/wall openings.
- Install Slats & Spacers (optional) starting at the bottom slat using 2 x Tek screws (HW5000) per Slat (1 per side). Only push in spacers half way - you will insert them fully once fixing cover is installed.
- Continue up the panel until the last slat is flush with top of the post.
- If using a Centre Mullion (VS5020) for larger panel widths (1800mm and over), centre it and screw it off to each slat.
- Clip in Snap On Fixing Cover (VS5025) for posts and centre mullions & push in all spacers firmly. Insert all caps

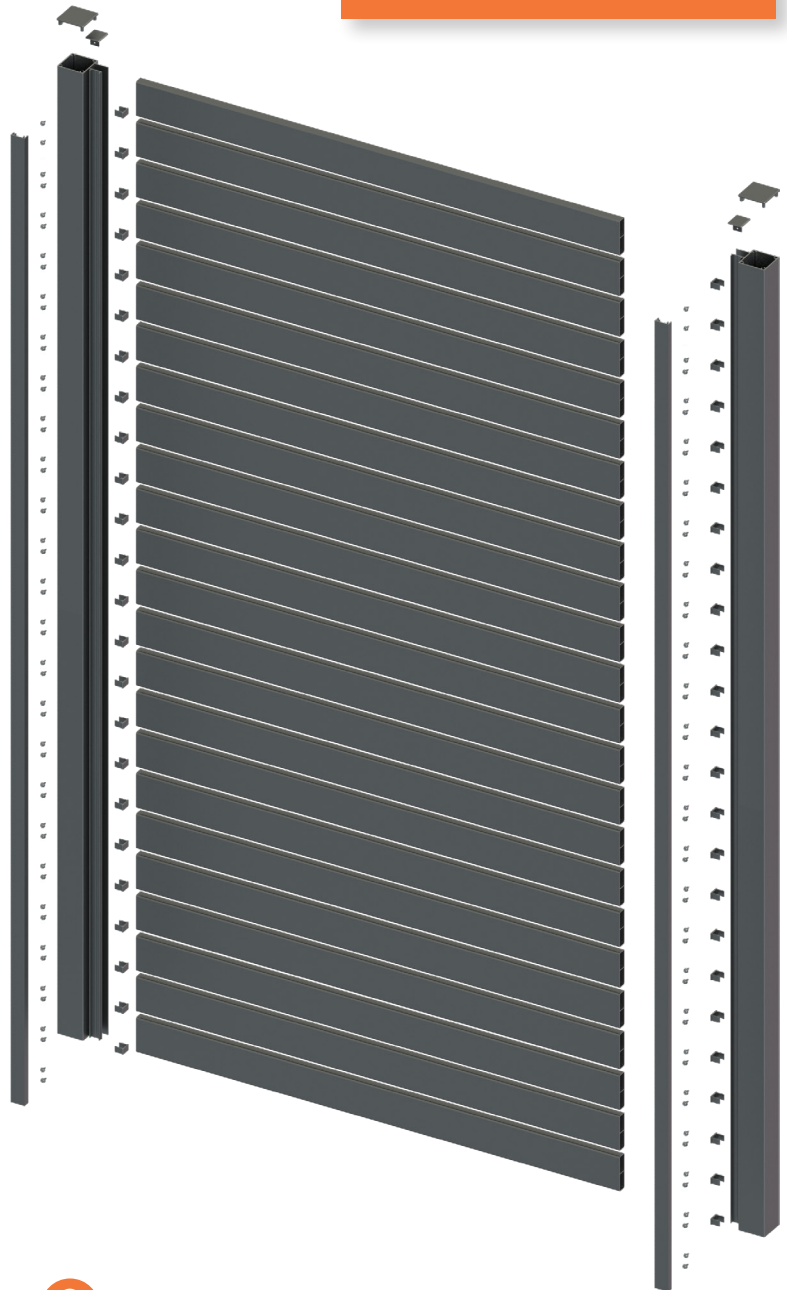


Example 65mm Slat Gate Setup - 1000 x 1800mm

	COMPONENT	QTY
A	65 x 16mm Slats @ 900mm	24
B	1-Way Concealed Fixing Posts @ 1800mm	2
C	Concealed Fixing Snap On Cover @ 1800mm	2
D	10mm In-Post Spacers - 50 Pack	1
G	Self Tapping Screws - 50 Pack	2
H	50 x 50mm Post Cap	2
I	Concealed U-Channel Cap	2

Slat Qty, Spacings and Finished Height Guide

Slat QTY	Slat Spacings	Gate Height Guide
24	10mm	1790mm High
	15mm	-
	20mm	-
23	10mm	1715mm High
	15mm	-
	20mm	-
22	10mm	1640mm High
	15mm	1745mm High
	20mm	-
21	10mm	1565mm High
	15mm	1665mm High
	20mm	1785mm High
20	10mm	1490mm High
	15mm	1585mm High
	20mm	1680mm High
19	10mm	1415mm High
	15mm	1505mm High
	20mm	1595mm High
18	10mm	1340mm High
	15mm	1425mm High
	20mm	1510mm High
17	10mm	1265mm High
	15mm	1345mm High
	20mm	1425mm High
16	10mm	1190mm High
	15mm	1265mm High
	20mm	1340mm High
15	10mm	1115mm High
	15mm	1185mm High
	20mm	1255mm High
14	10mm	1040mm High
	15mm	1105mm High
	20mm	1170mm High

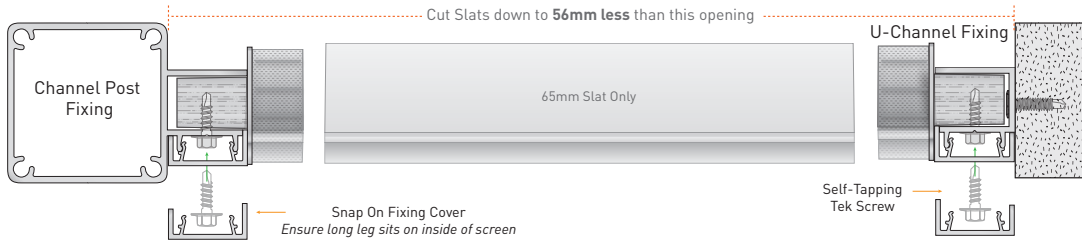
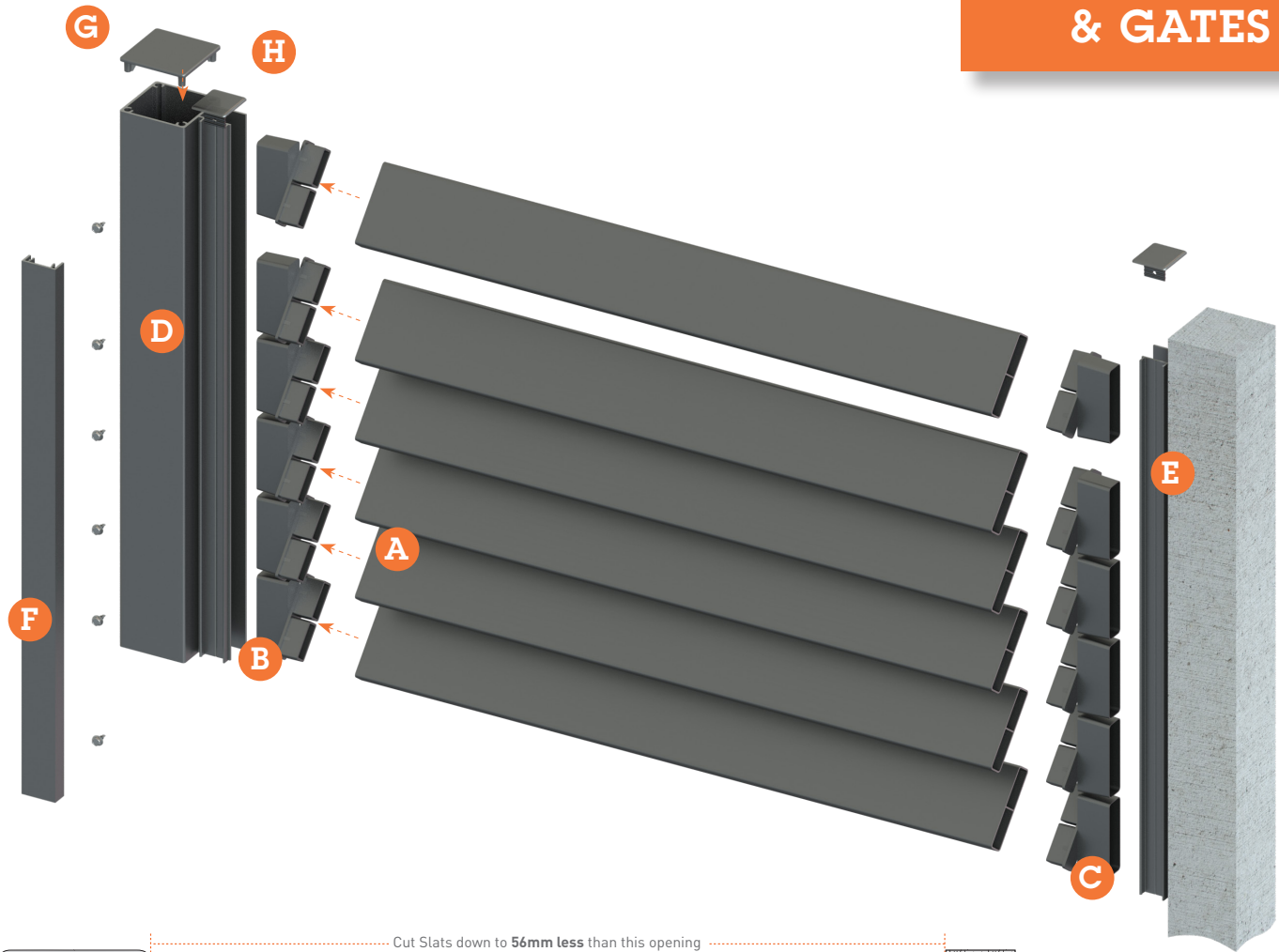


## 2 Slat Gate Install

- Gate Span = Gate Opening - Hinge & Latch allowances  
(Dependent on specific Hinge and Lock being used)
- If you require a custom width gate less than 1000mm, you will need to cut down the slats to suit:

**Slat length = Required Gate Span minus 100mm.**

- Install Slats & Spacers (optional) starting with the bottom spacer using 4 x Tek screws (HW5000) per Slat (2 per side). Only push in spacers half way - you will insert them fully once fixing cover is installed.
- Continue up the panel until the last slat is flush with top of the post.
- Clip in Snap On Fixing Cover (VS5025) for posts & push in all spacers firmly
- Insert all caps



## 1 Louvred Slat Install

<b>A</b>	Slats - 65 x 16mm only (VS5005)
<b>B</b>	Slat Louvre Bracket Pair (LHS) (VS5096)
<b>C</b>	Slat Louvre Bracket Pair (RHS) (VS5096)
<b>D</b>	1-Way Concealed Fixing Post (VS5035)
<b>E</b>	Concealed Fixing U Channel (VS5015)
<b>F</b>	Snap-On Fixing Cover (VS5025)
<b>G</b>	50 x 50mm Post Cap - P/C Ali (VS5090) or Plastic (VS5075)
<b>H</b>	U-Channel Cap - P/C Ali (VS5080) or Plastic (VS5065)

- Cut Slat lengths **56mm shorter** than the opening between post/wall (**6mm shorter than the distance between the U channels**).
- Insert Louvre brackets into either end of your slats, tapping them in firmly with a rubber mallet.  
**NB: Please note our brackets come in pairs with Left Hand & Right Hand louvre brackets for each side of the slats.**
- Install Louvred Slats into Posts or U-Channel starting at the bottom slat using 2 x Tek screws (HW5000) per Slat (1 per side).
- Continue up the panel until the last slat is flush with top of the post.
- Clip in Snap On Covers (VS5025) for Posts/U-Channels. Insert all caps.



You can create DIY Louvred Gates using 1-way posts, 65mm Slats and our louvred brackets. Simply use 2 screws per bracket per side (4 screws per slat).

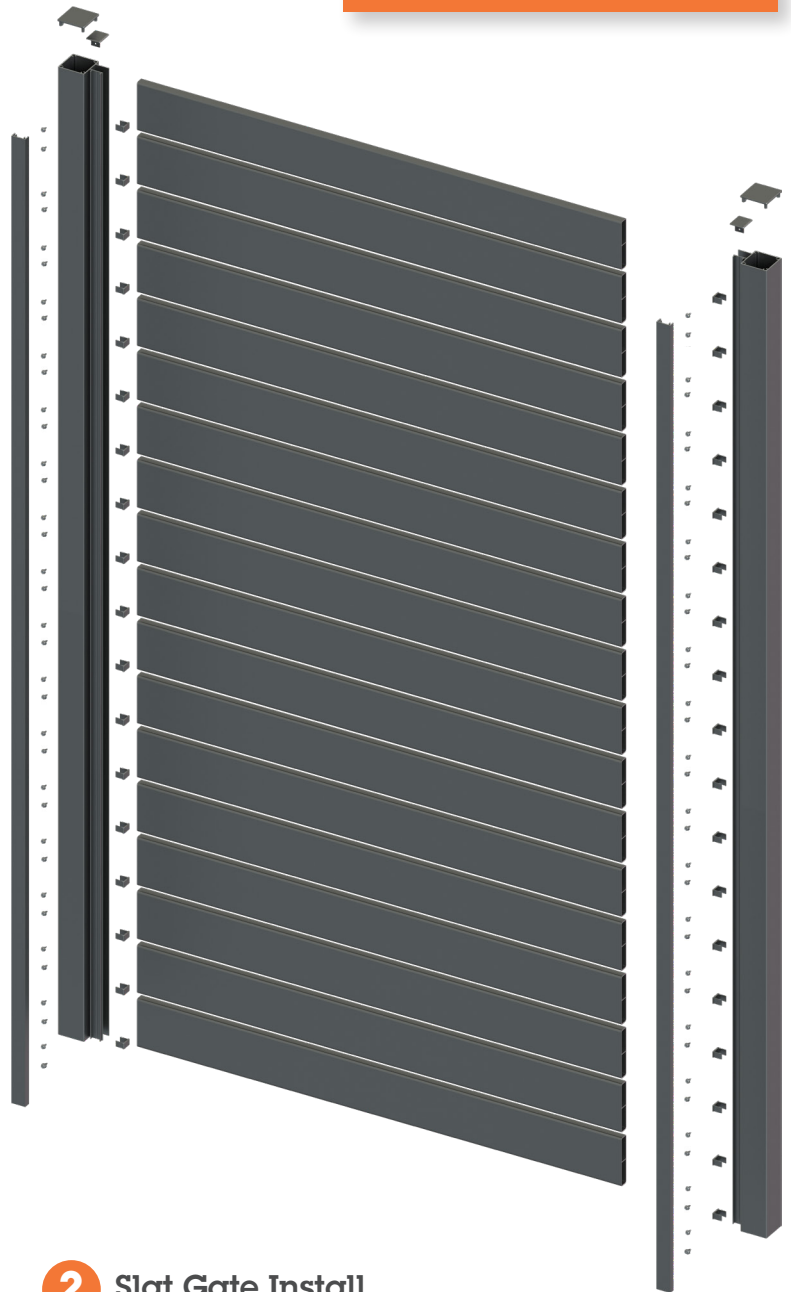


Example 65mm Slat Gate Setup - 1000 x 1800mm

	COMPONENT	QTY
A	90 x 16mm Slats @ 900mm	18
B	1-Way Concealed Fixing Posts @ 1800mm	2
C	Concealed Fixing Snap On Cover @ 1800mm	2
D	10mm In-Post Spacers - 50 Pack	1
G	Self Tapping Screws - 50 Pack	2
H	50 x 50mm Post Cap	2
I	Concealed U-Channel Cap	2

### Slat Qty, Spacings and Finished Height Guide

Slat QTY	Slat Spacings	Gate Height Guide
18	10mm	1800mm High
	15mm	-
	20mm	-
17	10mm	1700mm High
	15mm	1770mm High
	20mm	-
16	10mm	1600mm High
	15mm	1665mm High
	20mm	1740mm High
15	10mm	1500mm High
	15mm	1560mm High
	20mm	1630mm High
14	10mm	1400mm High
	15mm	1455mm High
	20mm	1520mm High
13	10mm	1300mm High
	15mm	1350mm High
	20mm	1410mm High
12	10mm	1200mm High
	15mm	1245mm High
	20mm	1300mm High
11	10mm	1100mm High
	15mm	1140mm High
	20mm	1190mm High
10	10mm	1000mm High
	15mm	1035mm High
	20mm	1080mm High



## 2 Slat Gate Install

- Gate Span = Gate Opening - Hinge & Latch allowances  
(Dependent on specific Hinge and Lock being used)
- If you require a custom width gate less than 1000mm, you will need to cut down the slats to suit:

**Slat length = Required Gate Span minus 100mm.**

- Install Slats & Spacers (optional) starting with the bottom spacer using 4 x Tek screws (HW5000) per Slat (2 per side). Only push in spacers half way - you will insert them fully once fixing cover is installed.
- Continue up the panel until the last slat is flush with top of the post.
- Clip in Snap On Fixing Cover (VS5025) for posts & push in all spacers firmly
- Insert all caps