

STANDARDS

- AS1170.1
Structural Self Supporting Balustrades
- Dead & Live Combination 4.7.1
Parapets, Balustrades & Railings

SUBSTRATE

- 6063 T6 Aluminium

HORIZONTALS DETAILS

- 50 x 25mm x 3mm RHS

VERTICALS DETAILS

- 16mm x 1.2mm Aluminium CHS
- Max 125mm Spacings
- Intermediate Posts 40 x 40 x 3mm
- Intermediate Posts set at Maximum 1500mm apart
- Flanged Intermediate Posts
110 x 50 x 9mm Base Plate

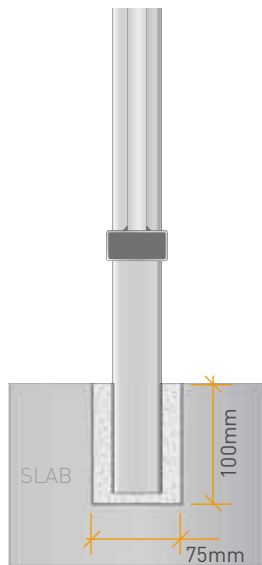
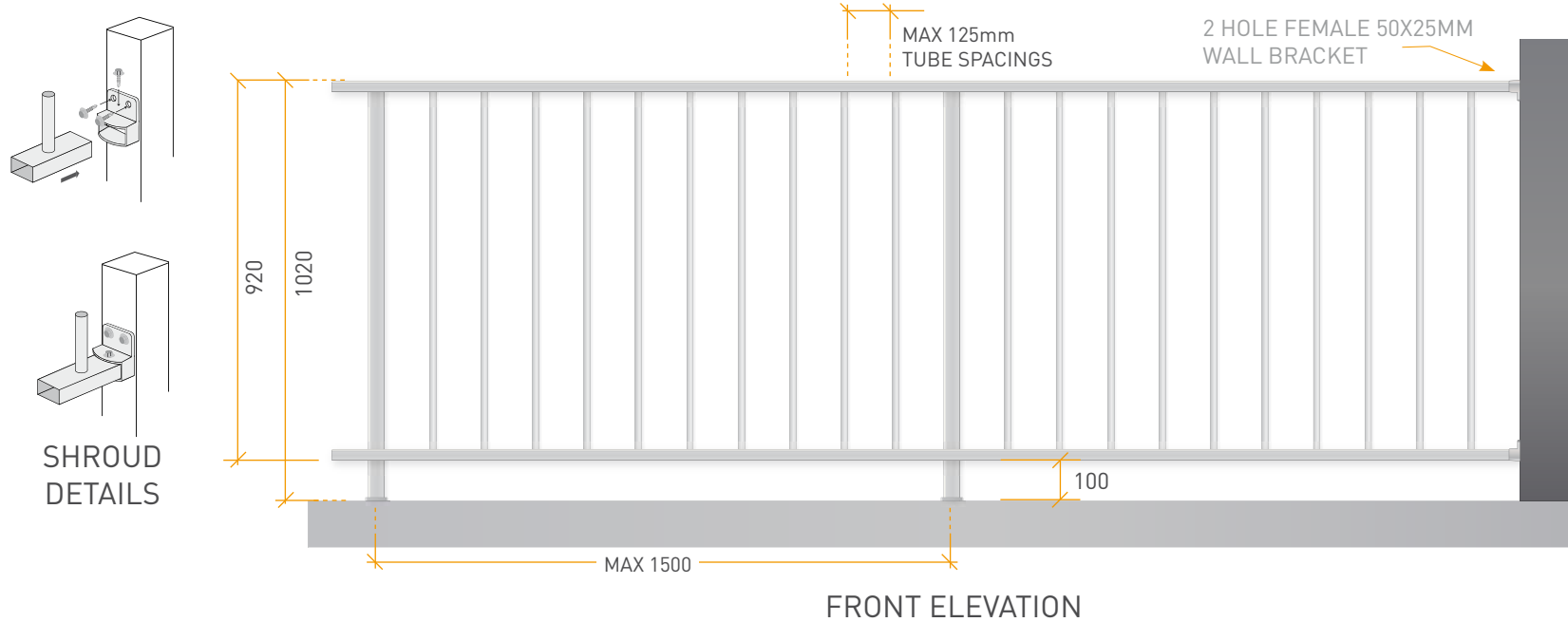
INTERMEDIATE POSTS

- Core Drilled
Min. 75mm x 100mm Core Drill Hole
using MP60 Non-Shrink Bostik Grout
 - Flanged Posts - On Slab
M10 Stainless Steel Rod & Nut;
Chemset Chemical Anchor
 - Flanged Posts - On Timber
M10 x 75mm Stainless Steel Coach Screw
OR
4 x 75mm Stainless Steel Hex Head
Batten Screw into structural timber
- NB:** All intermediate posts come standard with 110 x 50mm 2-Hole flange. Please request if you do not require flange.

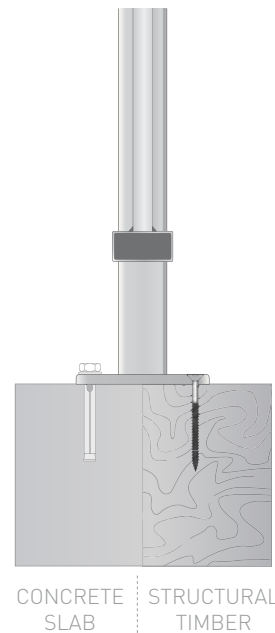
TITLE: **TB1** - ALUMINIUM VERTICAL
TUBE BALUSTRADE

CONTACT: sales@oxworks.com.au

oxworks.com.au // 1300 336 237

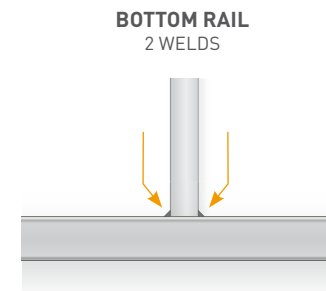
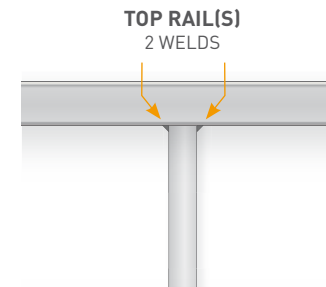
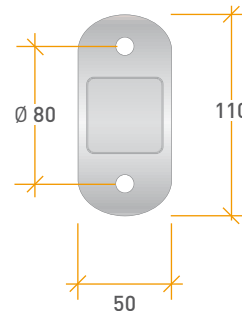


CORE DRILL
POST DETAIL



FLANGED (BASE PLATE) POST DETAIL

**INTERMEDIATE POST
9MM BASE PLATE**
110 x 50mm
10mm HOLES
REFER TO NOTES



WELD DETAILS